

# CAPITAL PAST TIMES

## NEWSLETTER FOR THE BISMARCK HISTORICAL SOCIETY

NOVEMBER 2018

WWW.BISMARCKHISTORY.ORG

### GARAGE BANDS

BY CAROLYN TWINGLEY, BISMARCK HISTORICAL SOCIETY BOARD OF DIRECTORS

The decade of the 1960's was a time of cultural change in America and Bismarck was no different in experiencing some of the same changes of which music was a big part. Little by little rock and roll was heard on the local Bismarck radio stations. Some might remember The Old Reb, a DJ on KFYZ, who played early rock and roll, or Saturday nights when Father John Owens hosted Padre's Platters. It wasn't unusual for teens to turn on stations that played the latest tunes on KOMA from Oklahoma City or WLS in Chicago when listening to their transistor radios in the evenings when those stations could be heard.

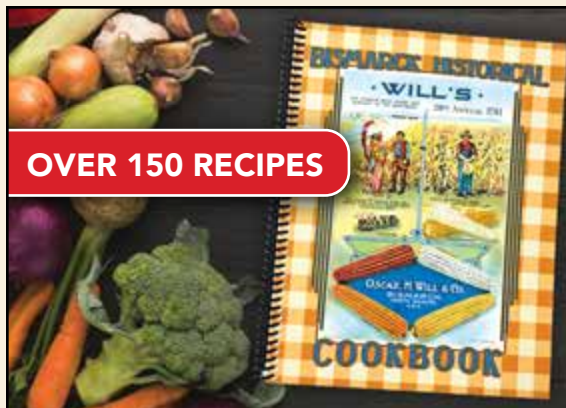
The "British Invasion," which included The Beatles, The Rolling Stones, The Kinks, The Animals and The Who for example, greatly influenced teens and it wasn't long before amateur bands starting organizing. These would come to be known as "garage bands" as they often practiced in their family garages. One might not think of North Dakota or Bismarck as a center for garage rock and roll bands. Yet at least one band, The Trade Winds

Five, Inc., had considerable success. Organizing in Bismarck, the band included Rick Torrence as their lead singer and guitar player, Vern Peterson on rhythm guitar, Rick Miller on bass, Pat Majors on drums, and Rip Cullins on keyboard. They would later add horns played by Tom Weisser and Mark VanHorn. The band performed across North Dakota, South Dakota, Iowa and Minnesota as well as in southern Canada.

Another successful band was Davey Bee and the Sonics. David Berdahl started the band in Bismarck and was lead guitarist and singer with his band. They opened for national groups like the Everly Brothers, Kenny Rogers and The First Edition, The Vogues, The Hollies and Herman's Hermits. The group continued to play together for 40 years.

Some estimate that by 1965 there were nearly 75 garage bands playing out of Bismarck. These groups would play at the Junior and Senior High Schools, Teen Canteen at Hillside Pool, The GP Hotel, the Roller Rink and other places where teens would gather. Smaller communities hired

these bands to come and play at their schools and community centers. Some might remember The Jades, The Dimensions, and The Prisms that included Larry Jahnke, Dale Twingley, Greg Nelson and Kelly Klusmann. As young entrepreneurs, many of these bands had teenage friends work as their managers. All in all the experiences were fun as well as learning situations.



OVER 150 RECIPES

Recipes in this cookbook are reproduced as found in their original form. Many came from recipe boxes in Bismarck family kitchens.

Purchase Your  
**BISMARCK HISTORICAL  
COOKBOOK At:**

\$20

Plaza Drug, Carden Custom Frames  
or the Gift Shop at the Heritage Center

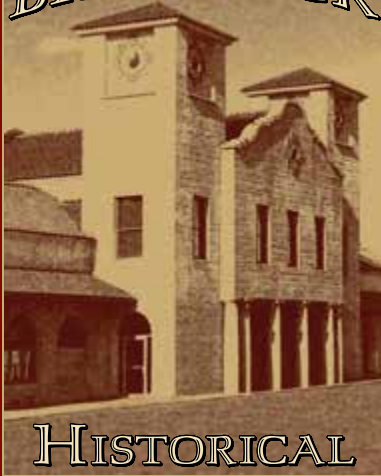
Published by



Printed by



# BISMARCK



## HISTORICAL SOCIETY

CAPITAL PAST TIMES  
is published by  
Bismarck Historical Society  
PO. Box 47  
Bismarck, ND 58502

### PRESIDENT

*Kate Waldera*

### VICE PRESIDENT

*Mike LaLonde*

### TREASURER

*Yvonne Kubis*

### SECRETARY

*Marilyn Snyder*

### IMMEDIATE PAST PRESIDENT

*Tom Mayer*

### EXECUTIVE DIRECTOR

*Walt Bailey*

### BOARD OF DIRECTORS

*Tom Atkinson, Mary Baird,  
Robert Hanna, Tom Hesford,  
Michael Heyd, Larry Jahnke,  
Evan Laib, Mike McCormack,  
Tom Stromme, Fern Swenson,  
Carolyn Twingley,  
Ann Vadnie, Annette Willis  
Ted Quanrud (honorary)*

### PHOTOGRAPHER

*Mike LaLonde*

### PROGRAM VIDEOGRAPHERS

*Larry Jahnke, Vince Iglehart*

### NEWSLETTER

*Ann Vadnie, Mary Baird,  
Evan Laib, Tom Tudor  
and Carolyn Twingley*

[WWW.BISMARCKHISTORY.ORG](http://WWW.BISMARCKHISTORY.ORG)



Find "Bismarck Historical Society" on Facebook

## PRESIDENT'S LETTER

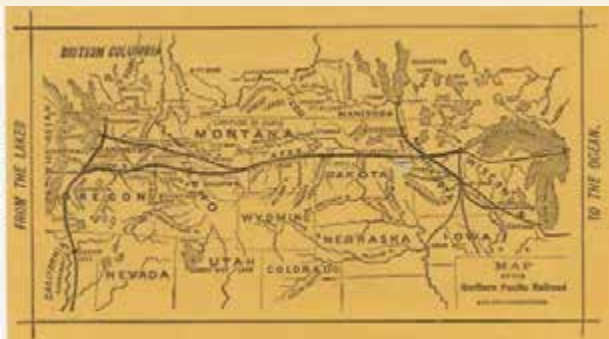
### PRESIDENT'S MUSINGS

by *Kate Waldera*



Edwin Ferry Johnson was born in Essex, VT on May 23, 1803 and was the third child of John and Rachel Ferry Johnson. The elder Johnson held the position of Surveyor-General of Vermont and often worked with and taught other young men interested in the field of civil engineering. Young Edwin spent much time with his father and learned about surveying, arithmetic, geometry, and plane trigonometry. After graduating from the American Literary, Scientific and Military Academy in 1825, Edwin continued to teach at the Academy and established the first practical mathematics and civil engineering department in the country. The time spent with his father and his formal academic experience had guided him to his life's calling.

Johnson had a keen interest in the country's infrastructure throughout his entire career and worked tirelessly toward its improvement. He was "an early visionary in the development of a nationwide railroad system, writing as early as 1828 that the railroad would become an essential component of American business once it was more fully understood and implemented."



The last position he held was as the first chief engineer of the new Northern Pacific Railroad from 1866-1870. When Johnson retired, he stayed on as a consulting engineer until his death in April 1872. The NPRR eventually reached the eastern banks of the Missouri River in Dakota Territory. A little frontier town was formed in May 1872 and named "Edwinton" in honor of "...one of the most distinguished engineers the country ever knew."

#### Sources:

Edwin Ferry Johnson helped engineer the American landscape  
(<http://bicentennial.norwich.edu/118-0/>)

Map of the Northern Pacific Railroad and Its Connections [promotional materials issued by Jay Cook & Co. in 1871 for the NPRR] (<https://digital.library.cornell.edu/catalog/ss:19343616>)

Memoir of Edwin Ferry Johnson, Civil Engineer  
(<http://users.rowan.edu/~fitzgerald/johnson9/images/1ef03.pdf>)

Norwich Record: The Alumni Magazine of Norwich University "Obscure no more"  
(<http://thenorwichrecord.com/obscure-no-more/>)

## TRIVIA

### BISMARCK CITY AUDITORIUM (NOW THE BELLE MEHUS AUDITORIUM)



In 1912, city residents voted to spend \$45,000 to build a city auditorium which would take about two years to complete. It is interesting to compare costs and realize that \$45,000 in 1914 would be equal to about \$1,100,000 today.

The *City Auditorium's* Opening Night performance on Jan. 19, 1914 was "*Robin Hood*." After the show, cast members dined at the McKenzie Hotel (later renamed Patterson Hotel). As a celebration of their successful performance, the menu that evening at the hotel included lobster. And as the story goes, the lobster sadly gave everyone who ate it food poisoning!



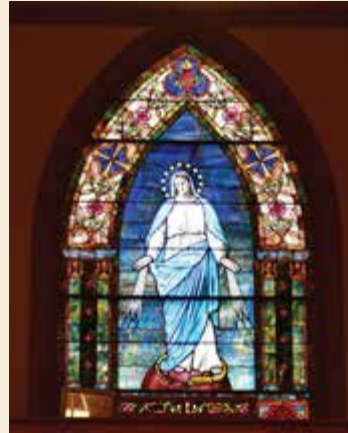
# THANKS FOR THESE GREAT PROGRAMS:

## AUGUST 29, 2018 – BISMARCK HISTORICAL SOCIETY ALL MEMBER PICNIC

The Hillside Aquatic Complex-Community Room at 1719 East Boulevard was the new venue for this year's membership picnic. Everyone enjoyed the delicious chicken, salads, and dessert catered by Cash Wise Foods. The program was the sharing of Bismarck memories by the audience. A good time was had by all!



## SEPTEMBER 12, 2018



St. Mary's Catholic Church on-site tour and talk, including information about the beautiful stained glass window in this historic Bismarck Church.

## OCTOBER 10, 2018



Marilyn Snyder  
"Early Medicine in Bismarck"

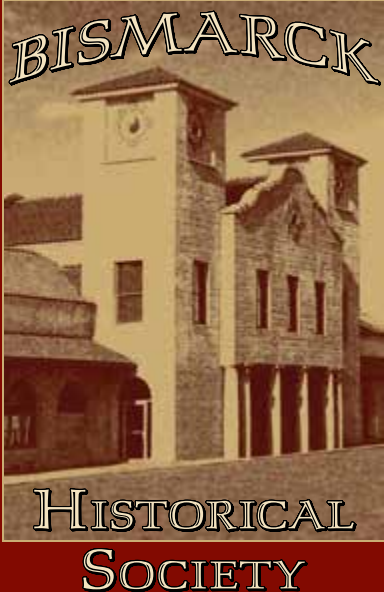
# DO YOU REMEMBER?

## THE COFFEE CUP CAFÉ



One little eatery many Bismarck residents might remember is the Coffee Cup Café which was purchased by Lydia Finlayson in 1948. The café, located at 116 N. Second Street first started as a 30 foot by 16 foot business that only seated about 20 patrons.

Through a series of remodels in 1955, 1958 and 1962 the Coffee Cup would eventually have a seating capacity of 100. It had a very homey atmosphere and was well run by Lydia. The Coffee Cup closed its doors for the final time in 1971.



Bismarck Historical Society  
 PO. Box 47  
 Bismarck, ND 58502

Non-Profit  
 U.S. Postage  
**PAID**  
 Permit #222  
 Bismarck, ND  
 58501

**MEMBERSHIP APPLICATION**

- Individual: \$30.00
- Family: \$45.00
- Corporate Member: \$110.00
- Donation \$ \_\_\_\_\_

|          |
|----------|
| NAME     |
| ADDRESS  |
| CITY     |
| STATE    |
| ZIP CODE |
| EMAIL    |
| PHONE    |

Make checks payable to:  
 Bismarck Historical Society  
 P.O. Box 47  
 Bismarck, ND 58502  
 Or renew online:  
[www.BismarckHistory.org](http://www.BismarckHistory.org)

**COMING EVENTS:**

**WEDNESDAY, NOVEMBER 14, 2018**



**THE BISMARCK HISTORICAL SOCIETY PRESENTS THE 2018 ANNUAL MEETING**  
**“BISMARCK HISTORICAL SOCIETY—ANOTHER GREAT YEAR”**

***Northern Lights Atrium-Heritage Center***

**5:15-5:45 p.m.** Social / Cash Bar

**6:00 p.m.** Dinner catered by *Harvest Brazilian Grill*

**7:15 p.m.** Program, Elections, Celebrations, Awards

**This year we also have DRAWINGS for variety of items:**

***The following donated by Ann Vadnie in Honor of her father, Harry Vadnie:***

--\$50 Gift Card to Famous Dave's --\$50 Gift Card to Red Lobster

--\$60 Gift Certificate for 18 hole Greens Fee for two rounds of golf at Riverwood or Tom O'Leary

***The following donated by Marilyn Snyder:***

--kit from Ancestry DNA

**One Silent Auction Item (money to go to the Bismarck Historical Society):**

Bid beginning at \$200.00 for the services of Dr. Marilyn Snyder to research a Genealogy Study for one family

***MORE INFORMATION WILL ARRIVE FOR YOU IN A POSTCARD***

*to invite you and to give you RSVP directions*

*We Look Forward to Seeing You!*

**DECEMBER 12, 2018**

**“HIGHLAND ACRES AREA NATIONAL REGISTER NOMINATION PROJECT”**

**MARCH 13, 2019**

Ted Quanrud: **VINTAGE BISMARCK POSTCARDS**

**JANUARY 9, 2019**

Terry Bohn  
**“MODERN BASEBALL IN BISMARCK”**

**APRIL 10, 2019**

Susan Lundberg  
**“HISTORY OF SLEEPY HOLLOW”**

**FEBRUARY 13, 2019**

Mike LaLonde (and friends) **“THE PHOTOGRAPHY OF LEO LALONDE”**

**MAY 8, 2019**

***FOUNDERS DAY*** celebration of **“BISMARCK'S BIRTHDAY”**

**IMPORTANT NOTE:**

All programs, unless noted otherwise, will begin at 6:30 and be held in Room A at the Bismarck Public Library.

More information on coming events in the next newsletter.